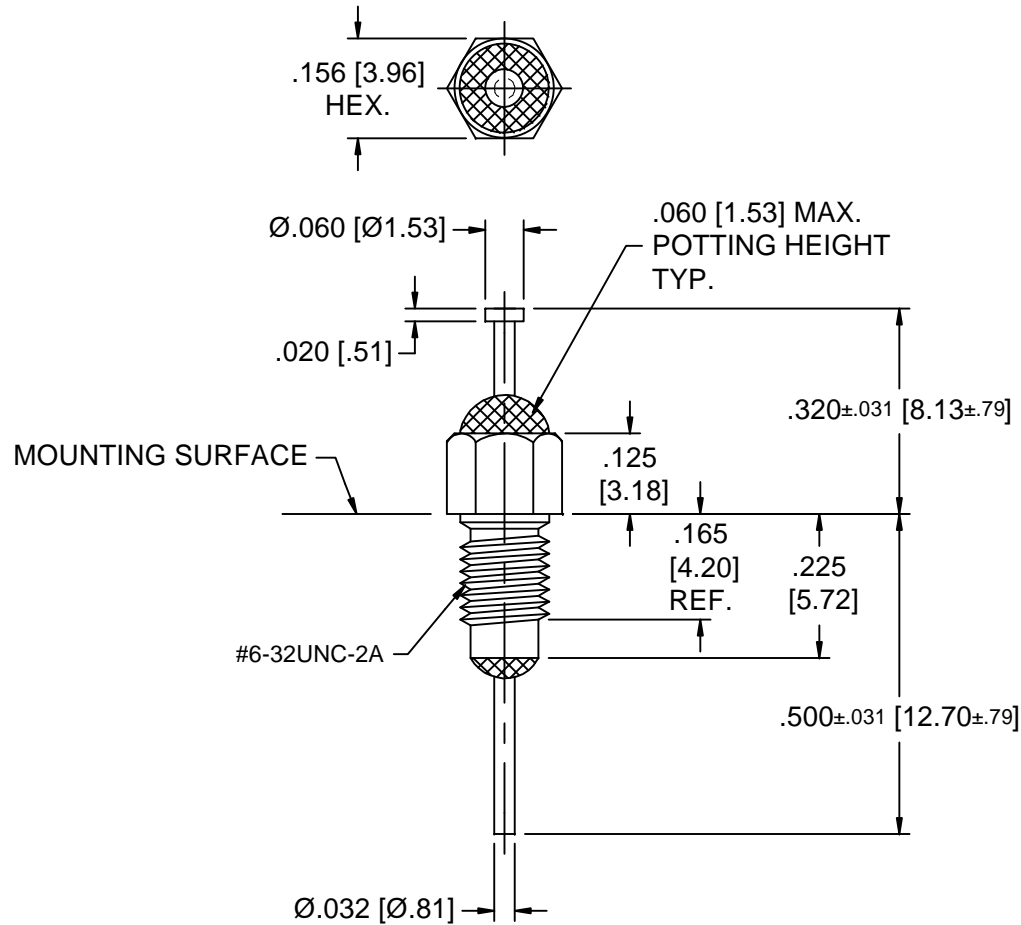


NOTES:

1. SUGGESTED MOUNTING HOLE \varnothing .147 [3.73]
2. HARDWARE IS INCLUDED
3. MAXIMUM MOUNTING TORQUE: 3 IN-LBS
4. THIS IS A LEAD FREE PRODUCT
5. MAXIMUM REFLOW IS 245°C FOR 5 SECONDS

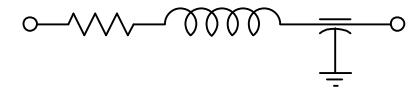


BUSHING FINISH	SILVER
LEAD FINISH	SILVER
CAPACITANCE	22 nF GMV
TEMP. RANGE	-55°C TO +125°C
CURRENT	10 AMPS MAX.
WORKING VOLTAGE	125°C, 100 VDC MAX.
DC RESISTANCE	.01 OHMS MAX.

I.L. PER MIL-STD-220 @ 25°C (NO LOAD)

FREQ. MHz	I.L. (dB)
1 MHz	7
10 MHz	27
30 MHz	34
100 MHz	43
300 MHz	50
1 GHz	60

SCHEMATIC



MARKING: PART: S726F002
 BAG: 51F-726-002
 DATE CODE
 QTY. / PACK
 (50 / BAG MAX.)



										00	REV. NO.	UNLESS OTHERWISE SPECIFIED DIMENSIONS ARE IN INCHES [MILLIMETERS] DO NOT SCALE	TOLERANCES UNLESS OTHERWISE SPECIFIED Dec. .x ± Dec. .xx ± Dec. .xxx ±.010 [25] Angles ± 0° 30"	SPECTRUM CONTROL INC. Dwn. Hassett Date 2-16-06 Engr. Struchen Sheet 1 of 1	FAIRVIEW PENNSYLVANIA Description FEED THRU RESIN SEAL FILTER 51F-726-002	
										CN 25673-CPD	CHANGE NOTICE NO.					CODE IDENT. NO. 0LSP2

Quality Products From The Specialists In Electro-Magnetic Comptability

